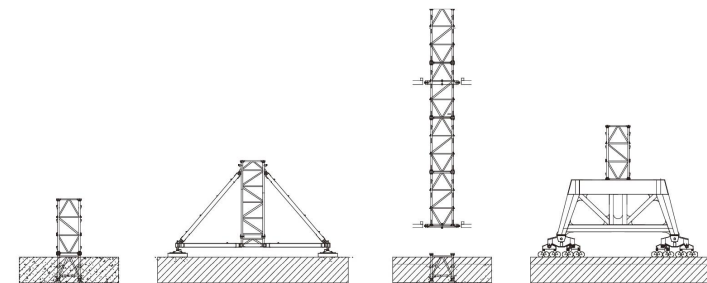
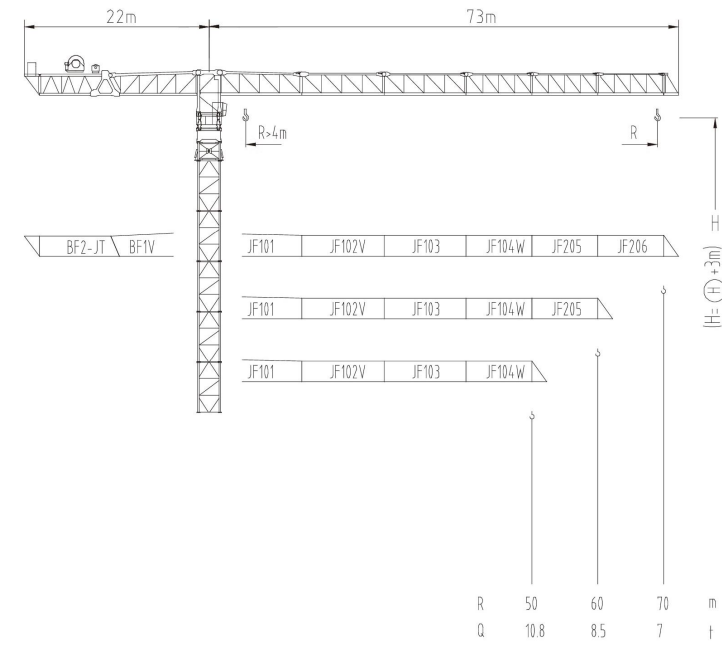




# 2500系列

JLP800

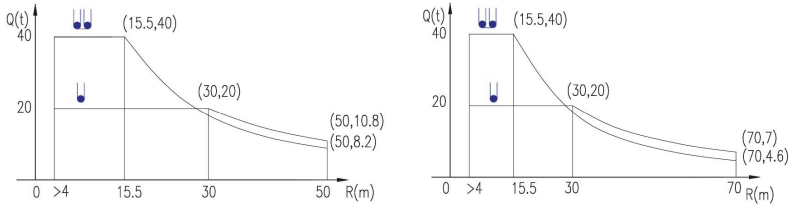
40t



JLP800/40t

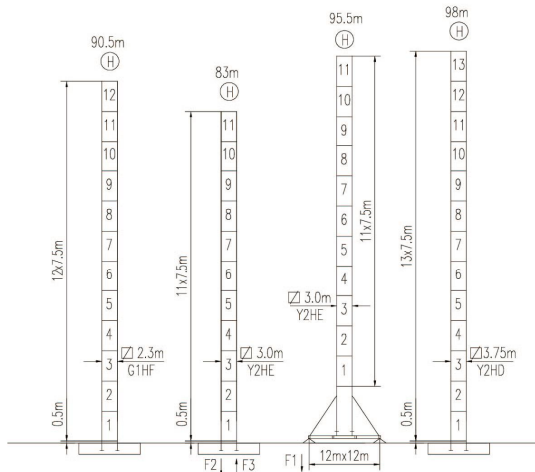
载荷曲线 Load Chart

R (m)	倍率 Fall	R(Cmax) (m)	Cmax (t)	20	25	30	35	40	50	60	65	70
70	30	20	20	20	20	20	16.6	14.1	10.8	8.5	7.7	7
	15.5	40	29.2	22.1	17.4	14.2	11.9	8.2	6.2	5.3	4.6	
60	30	20	20	20	20	20	16.6	14.1	10.8	8.5		
	15.5	40	29.2	22.1	17.4	14.2	11.9	8.2	6.2			
50	30	20	20	20	20	20	16.6	14.1	10.8			
	15.5	40	29.2	22.1	17.4	14.2	11.9	8.2				



特殊载荷可定制, 请咨询  
Special data is available. Additional Loads on request

自立塔身高度 Self-supporting Tower Height



	●	■
F1	115t	100t
		*

	●	■
F2	379t	347t
F3	249t	242t
		215t

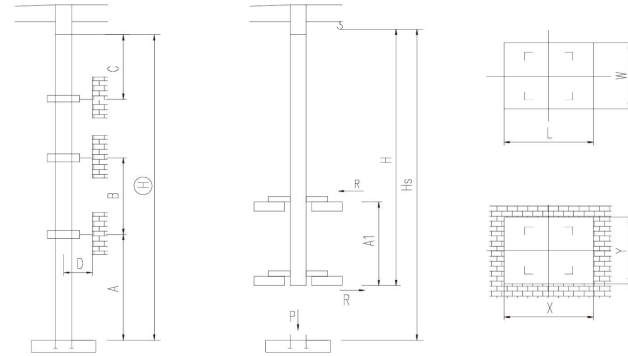
■ 工作状态支反力 In service reaction  
 ■ 非工作状态支反力 out of service reaction  
 ● 整机自由高度重量 (不含平衡重及压重)  
 Total weight free standing crane (excludes counter weight & ballast)

JLP800/40t

附着塔机 Braced Crane

□ 2.3m

内爬塔机 Internal Climbing Crane



塔身 Mast	A (m)	B (m)	C (m)	D (m)	H (m)
G1HF	72	50	61	>4	220*

附着层数 Number of tie collars = (H-A-C) / B + 1

塔身 Mast	Hs (m)	H (m)	A1 (m)	P (t)	R (t)	X (m)	Y (m)	L (m)	W (m)
G1HF					*				

主要性能参数 Specifications

机构 Mechanism	●		●		电动机 Motor	
	m/min	t	m/min	t		kW
▲ 125LF110R9	0-20	20	0-10	40	900m	110
	0-25	16	0-12.5	32		
	0-50	8	0-25	16		
▼ 125LF160R9	0-28	20	0-14	40	900m	160
	0-35	16	0-18	32		
	0-70	8	0-36	16		
◀▶ 125RA55H70	0-56 m/min					55
● 15RFCV	0-0.4 rpm					2x15
☀️ RTT					*	

电压 Voltage	kVA
380V (±10%)	*

\*与制造商联系咨询 Contact us, please

本技术参数不受法律约束, 技术信息请详见相应说明书。  
Specifications and data are not legally binding. For any technical information, please refer to corresponding instructions.



hnjlk.com

保留修改权力, 恕不另行通知 | Subject to modifications

2500系列

2500系列