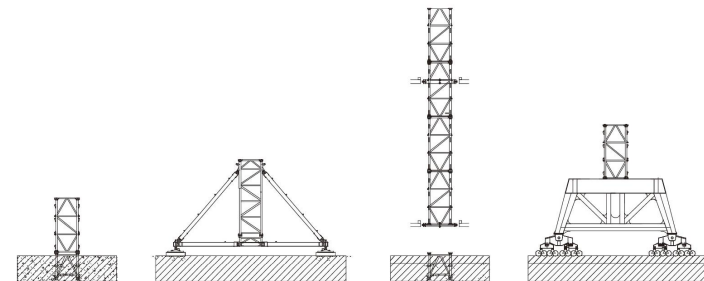
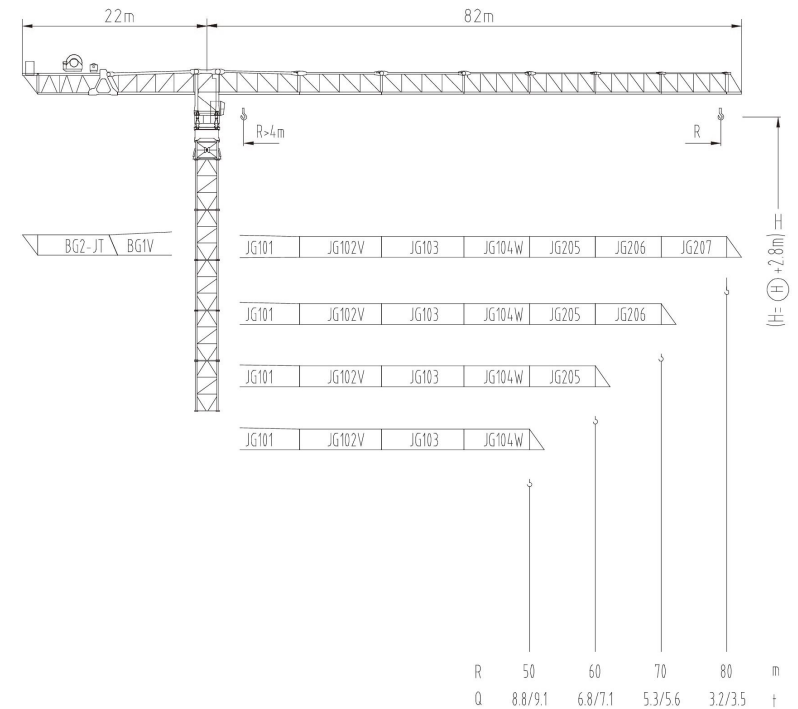




# 2000系列

JLP470

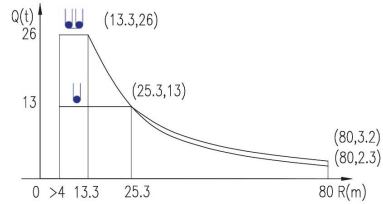
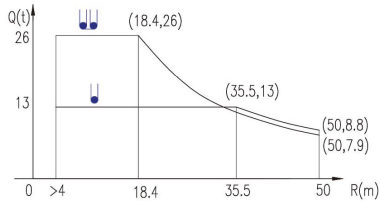
26t/20t



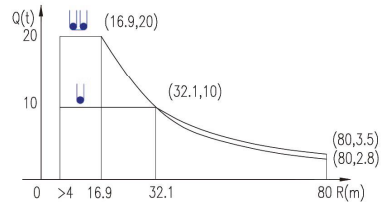
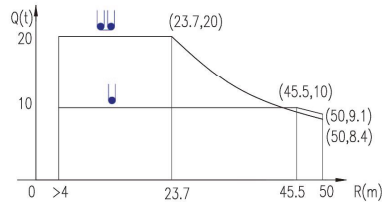
JLP470/26t/20t

载荷曲线 Load Chart

R (m)	倍率 Fall	R(Cmax) (m)	Cmax (t)	30	35	40	45	50	55	60	65	70	75	80
80	●	25.3	13	10.7	9	7.7	6.7	5.9	5.2	4.7	4.2	3.8	3.5	3.2
	●●	13.3	26	9.8	8.1	6.8	5.8	5	4.3	3.8	3.3	2.9	2.6	2.3
70	●	32.5	13	13	11.9	10.3	8.9	7.9	7.1	6.4	5.8	5.3		
	●●	16.9	26	13.2	11	9.4	8	7	6.2	5.5	4.9	4.4		
60	●	34.2	13	13	12.6	10.8	9.5	8.4	7.5	6.8				
	●●	17.8	26	14	11.7	9.9	8.6	7.5	6.6	5.9				
50	●	35.5	13	13	13	11.4	9.9	8.8						
	●●	18.4	26	14.7	12.2	10.5	9	7.9						



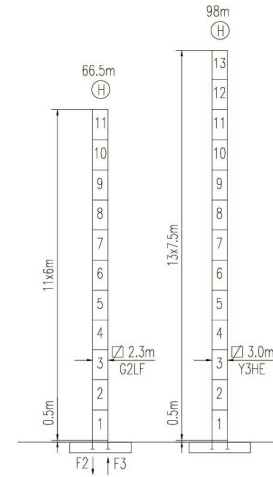
R (m)	倍率 Fall	R(Cmax) (m)	Cmax (t)	30	35	40	45	50	55	60	65	70	75	80
80	●	32.1	10	10	9.1	7.9	6.9	6.1	5.5	4.9	4.5	4.1	3.8	3.5
	●●	16.9	20	11.1	8.4	7.2	6.2	5.4	4.8	4.2	3.8	3.4	3.1	2.8
70	●	41.4	10	10	10	9.2	8.2	7.4	6.7	6.1	5.6			
	●●	21.6	20	13.7	11.5	9.8	8.5	7.5	6.7	6	5.4	4.9		
60	●	43.7	10	10	10	9.8	8.7	7.8	7.1					
	●●	22.8	20	14.6	12.2	10.4	9.1	8	7.1	6.4				
50	●	45.5	10	10	10	10	9.1							
	●●	23.7	20	15.2	12.8	10.8	9.5	8.4						



特殊载荷可定制, 请咨询  
Special data is available. Additional Loads on request

JLP470/26t/20t

自立塔身高度 Self-supporting Tower Height



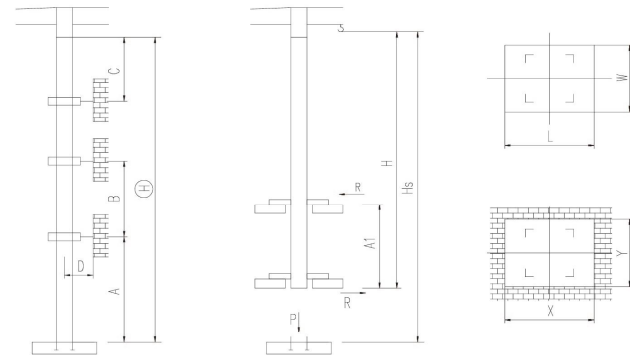
	●	■
F2	255t	333t
F3	162t	252t
⊗	135t	

■ 工作状态支反力 In service reaction  
 ■ 非工作状态支反力 out of service reaction  
 ⊗ 整机自由高度重量 (不含平衡重及压重)  
 Total weight of free standing crane (excludes counter weight & ballast)

附着塔机 Braced Crane

□ 2.3m

内爬塔机 Internal Climbing Crane



塔身节 Mast	A (m)	B (m)	C (m)	D (m)	⊙ (m)
G2LF	52	36	44	>4	220*

附着层数 Number of tie collars = (⊙-A-C) / B + 1

塔身 Mast	Hs (m)	H (m)	A1 (m)	P (t)	R (t)	X (m)	Y (m)	L (m)	W (m)
G2LF					*				

JLP470/26t/20t