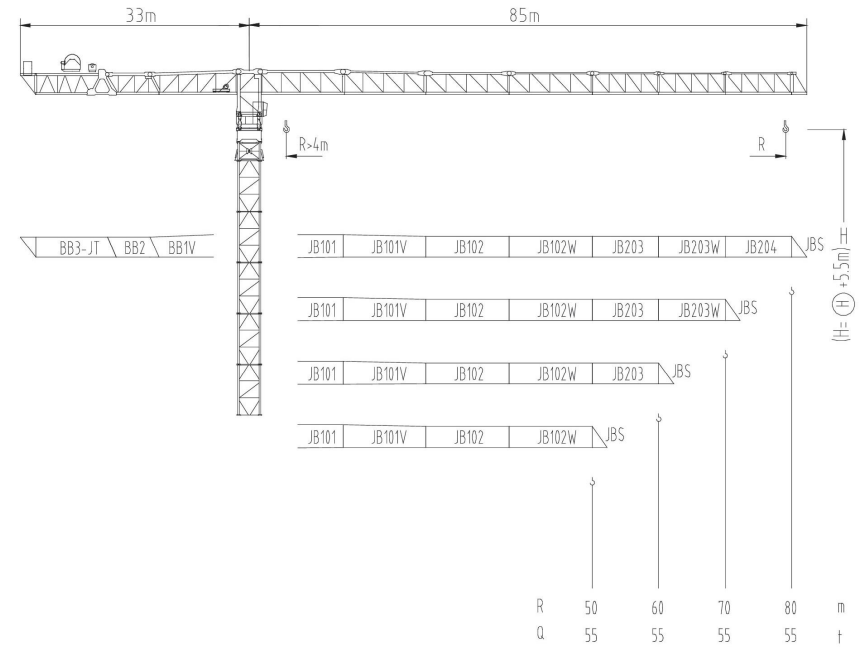




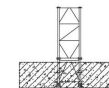
4000系列

JLP4500

220t



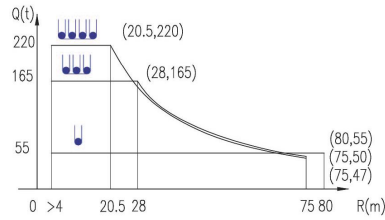
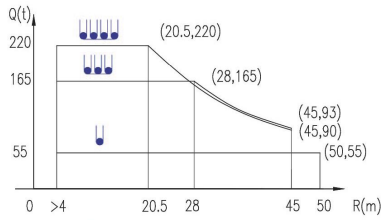
4000系列



JLP4500/220t

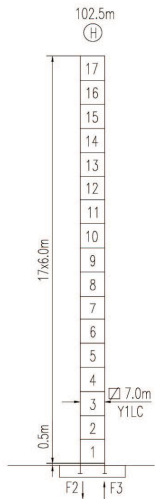
载荷曲线 Load Chart

R (m)	倍率 Fall	R(Cmax) (m)	Cmax (t)	20	25	30	35	40	45	50	55	60	65	70	75	80
80	80	55	55	55	55	55	55	55	55	55	55	55	55	55	55	55
	28	165	165	165	147	124	107	93	82	73	68	60	54	50		
	20.5	220	220	177	144	121	104	90	79	70	63	57	51	47		
70	70	55	55	55	55	55	55	55	55	55	55	55	55	55		
	28	165	165	165	147	124	107	93	82	73	68	60				
	20.5	220	220	177	144	121	104	90	79	70	63	57				
60	60	55	55	55	55	55	55	55	55	55	55					
	28	165	165	165	147	124	107	93	82	73						
	20.5	220	220	177	144	121	104	90	79	70						
50	50	55	55	55	55	55	55	55	55							
	28	165	165	165	147	124	107	93								
	20.5	220	220	177	144	121	104	90								



特殊载荷可定制, 请咨询
Special data is available. Additional Loads on request

自立塔身高度 Self-supporting Tower Height



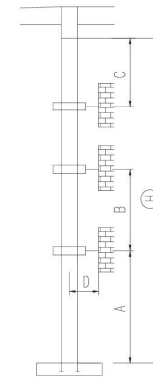
	●	■
F2	987t	882t
F3	422t	416t
⊕	770t	

- 工作状态支反力 In service reaction
- 非工作状态支反力 out of service reaction
- ⊕ 整机自由高度重量 (不含平衡重及压重) Total weight of free standing crane (excludes counter weight & ballast)

JLP4500/220t

附着塔机 Braced Crane

7.0m



塔身节 Mast	A (m)	B (m)	C (m)	D (m)	⊕ (m)
Y1LC	88	61	74	>6.5	200*

附着层数 Number of tie collars = (⊕ - A - C) / B + 1

主要性能参数 Specifications

机构 Mechanism	●		●●●		●●●●		电动机 Motor kW
	m/min	t	m/min	t	m/min	t	
350LF220R16	0-19	55	0-6.4	165	0-4.8	220	1600m
	0-23.5	44	0-8	132	0-6	176	
	0-47	22	0-16	66	0-12	88	
350LF315R16	0-27	55	0-8.5	165	0-6.5	220	1600m
	0-33.5	44	0-10.5	132	0-8	176	
	0-67	22	0-21	66	0-16	88	
200RA90H80	0 - 40 m/min						90
24RFCV	0 - 0.3 rpm						4x24
RTT	*						

电压 Voltage	kVA
380V (±10%)	*

*与制造商联系咨询 Contact us, please

本技术参数不受法律约束, 技术信息请详见相应说明书。
Specifications and data are not legally binding. For any technical information, please refer to corresponding instructions.



hnjzlk.com

保留修改权力, 恕不另行通知 | Subject to modifications