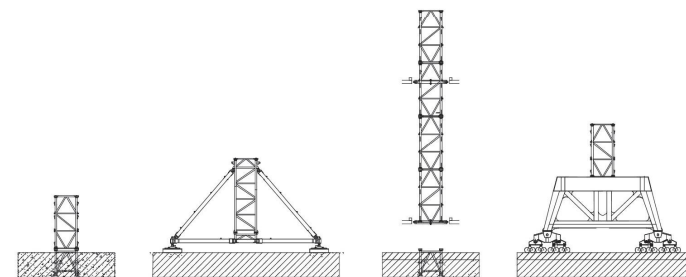
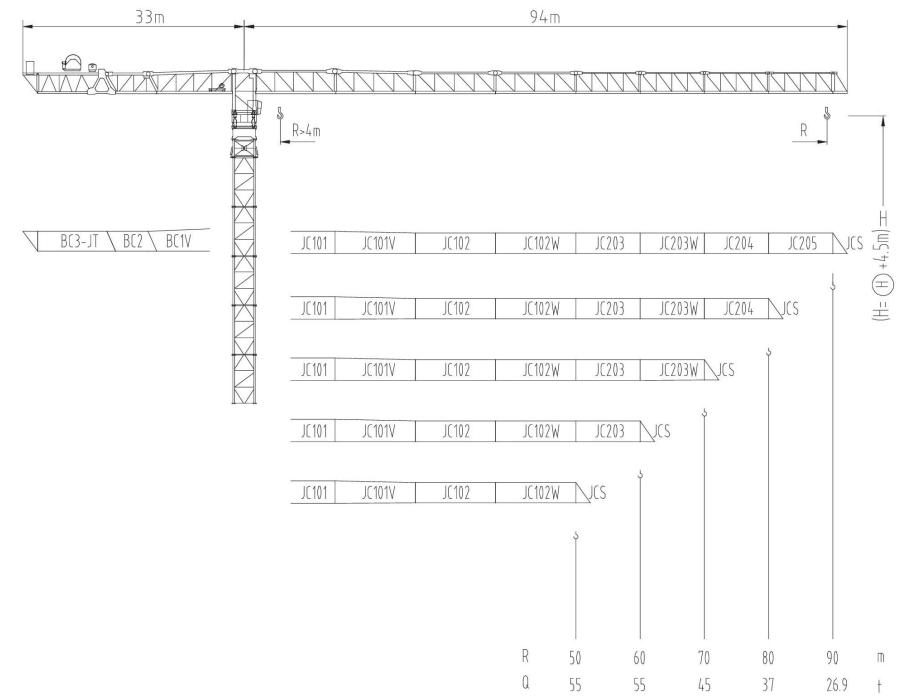




3600系列

JLP3600

200t

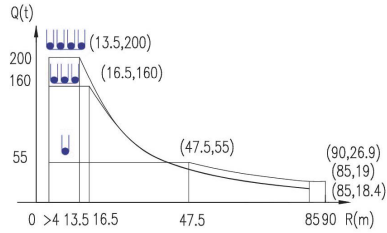
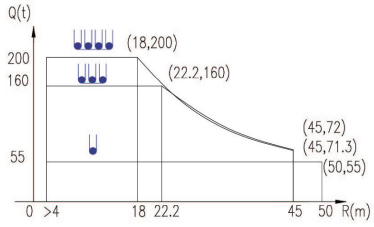


JLP3600/200t

3600系列

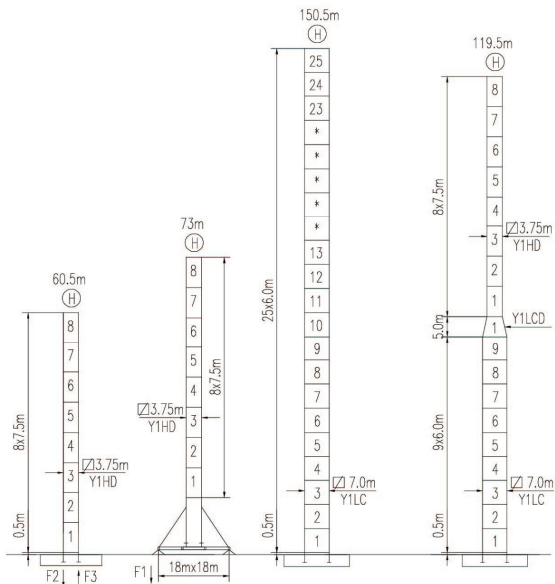
载荷曲线 Load Chart

R (m)	倍率	R(Cmax) (m)	Cmax (t)	20	25	30	35	40	45	50	55	60	65	70	75	80	85	90	
90	Fall	47.5	55	55	55	55	55	55	55	52.4	47.2	42.8	39.1	36	33.2	30.9	28.8	26.9	
		16.5	160	130	101	81.5	67.5	57.1	49	42.6	37.4	33	29.4	26.2	23.5	21.1	19		
80	Fall	13.5	200	130	100	80.8	66.9	56.5	48.4	42	36.8	32.4	28.7	25.6	22.9	20.5	18.4		
		56.5	55	55	55	55	55	55	55	55	55	51.5	47.1	43.6	40.1	37			
70	Fall	19.7	160	157	123	99.4	82.9	70.5	60.8	53.1	46.9	41.7	37.3	33.6	30.4				
		16	200	157	122	98.8	82.2	69.9	60.2	52.5	46.3	41.1	36.7	33	29.8				
60	Fall	58.5	55	55	55	55	55	55	55	55	55	53.6	49	45					
		20.6	160	160	131	107	89.8	77	67.1	59.1	52.6	47.2	42						
50	Fall	16.7	200	159	129	105	87.9	75.1	65.1	57.2	50.7	45.3	40.7						
		60.5	55	55	55	55	55	55	55	55	55	55	55						
50	Fall	21.5	160	160	136	111	93.4	80	69.6	61.2	54.4								
		17.5	200	175	136	111	92.8	79.4	69	60.6	53.8								
50	Fall	50	55	55	55	55	55	55	55	55									
		22.2	160	160	141	115	96.8	82.7	72										
50	Fall	18	200	179	140	114	95.8	82.1	71.3										



特殊载荷可定制，请咨询
Special data is available .Additional Loads on request

自立塔身高度 Self-supporting Tower Height



F1	386t	273t
	642t	

F2	1021t	684t
F3	610t	397t
	538t	

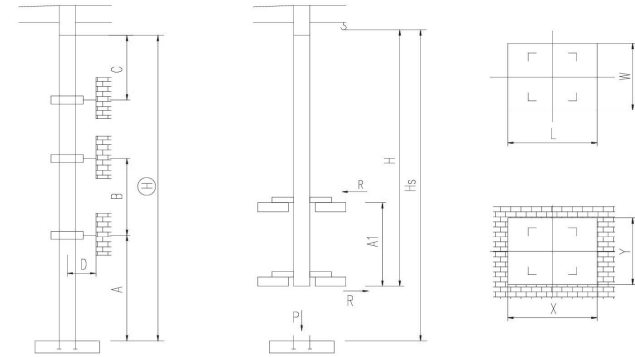
■ 工作状态支反力 In service reaction
■ 非工作状态支反力 out of service reaction
⊕ 整机自由高度重量 (不含平衡重及压重)
Total weight of free standing crane (includes counter weight & ballast)

JLP3600/200t

附着塔机 Braced Crane

□ 3.75m

内爬塔机 Internal Climbing Crane



塔身节 Mast	A (m)	B(m)	C (m)	D (m)	⊕(m)
Y1HD	42	29	35	>5.5	200

附着层数 Number of tie collars = (⊕-A-C) / B + 1

塔身节 Mast	Hs(m)	H(m)	A1(m)	P(t)	R(t)	X(m)	Y(m)	L(m)	W(m)
Y1HD									*

主要性能参数 Specifications

机构 Mechanism	●		●●		●●●		电动机 Motor		
	m/min	t	m/min	t	m/min	t			
▲	300LF220R16	0-21	55	0-7	160	0-5.2	200	1600m	220
		0-26	44	0-8.5	128	0-6.5	160		
		0-52	22	0-17	64	0-13	80		
▼	300LF315R16	0-30	55	0-10.3	160	0-7.7	260	1600m	315
		0-37.5	44	0-12.5	128	0-9.5	160		
		0-75	22	0-25	64	0-19	80		
◀▶	165RA75H90	0 - 52 m/min					75		
⊕	18RFCV	0 - 0.5 rpm					4x18.5		
⊗	RTT	*							

电压 Voltage	kVA
380V (±10%)	*

*与制造商联系咨询 Contact us, please

本技术参数不受法律约束，技术信息请详见相应说明书。
Specifications and data are not legally binding. For any technical information, please refer to corresponding instructions.



hnjzk.com

保留修改权力，恕不另行通知 | Subject to modifications