

主要性能参数 Specifications

机构 Mechanism	m/min		t		电动机Motor kW
	m/min	t	m/min	t	
80LF110R9	0-36	13	0-18	26	900m 110
	0-45	10	0-22.5	20	
	0-90	5	0-45	10	
60LF110R9	0-45	10	0-24.5	20	900m 110
	0-60	8	0-30	16	
	0-120	4	0-60	8	
125RA22H80	0-70 m/min				22
11RFCV	0-0.6 rpm				2x11
RTT					*

电压 Voltage	kVA
380V (±10%)	*

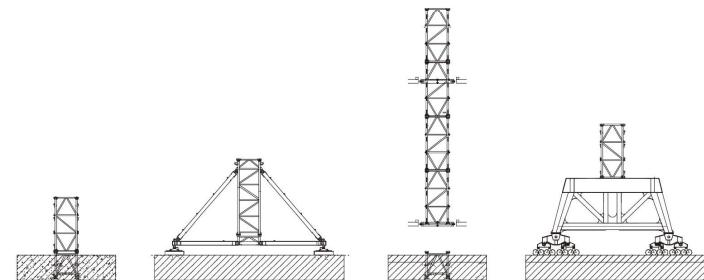
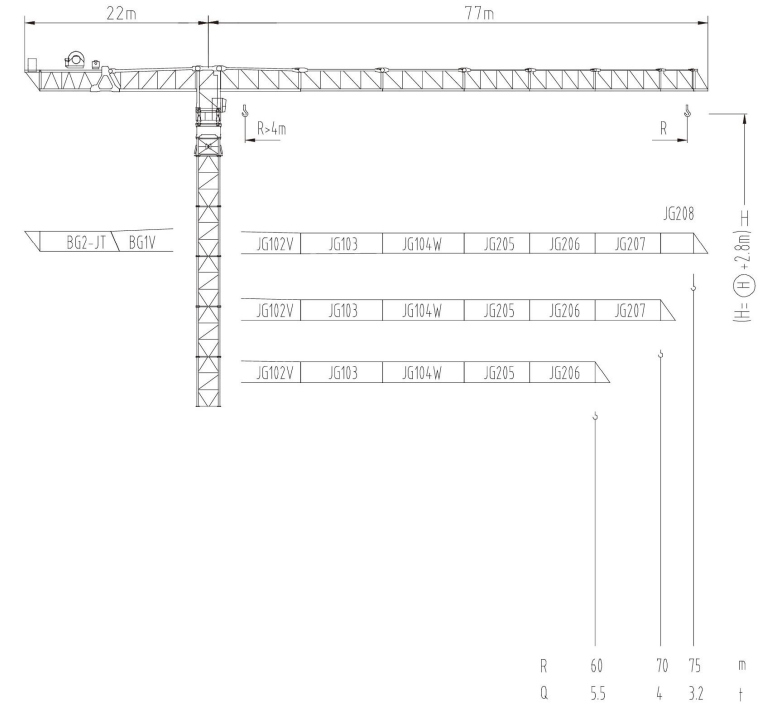
*与制造商联系咨询 Contact us, please

本技术参数不受法律约束, 技术信息请详见相应说明书。
Specifications and data are not legally binding. For any technical information,
please refer to corresponding instructions.

2000系列

JLP315

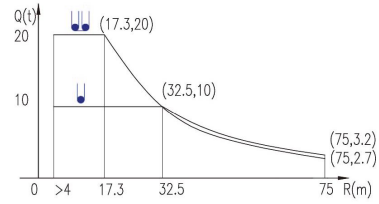
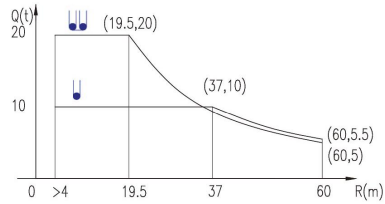
20t



JLP315/20t

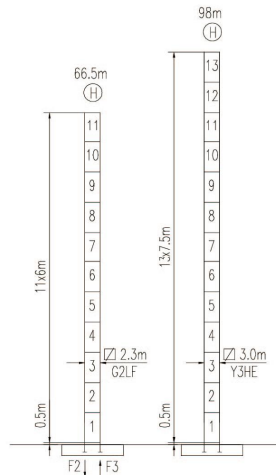
载荷曲线 Load Chart

R (m)	倍率 Fall	R(Cmax) (m)	Cmax (t)	20	25	30	40	45	50	55	60	65	70	75
75	●	32.5	10	10	10	10	7.8	6.7	5.8	5.1	4.5	4	3.6	3.2
		17.3	20	17	13.1	10.5	7.2	6.2	5.3	4.6	4	3.5	3.1	2.7
70	●	34.2	10	10	10	10	8.3	7.2	6.3	5.6	4.9	4.4	4	
		18.1	20	17.8	13.8	11.2	7.8	6.7	5.8	5.1	4.5	3.9	3.5	
60	●	37	10	10	10	10	9.1	7.9	6.9	6.2	5.5			
		19.5	20	19.5	15.1	12.2	8.6	7.4	6.4	5.7	5			



特殊载荷可定制, 请咨询
Special data is available .Additional Loads on request

自立塔身高度 Self-supporting Tower Height



	●	■
F1	141t	165t
	104t	

	●	■
F2	263t	335t
F3	172t	253t
	98t	

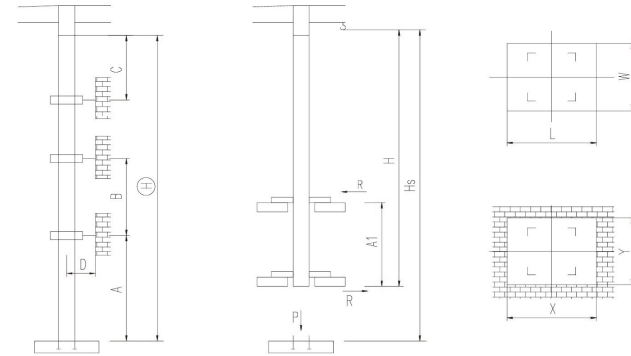
■ 工作状态支反力 In service reaction
 ■ 非工作状态支反力 out of service reaction
 ② 整机自由高度重量 (不含平衡重及压重)
 Total weight of free standing crane (excludes counter weight & ballast)

JLP315/20t

附着塔机 Braced Crane

2.3m

内爬塔机 Internal Climbing Crane



塔身节 Mast	A (m)	B(m)	C (m)	D (m)	H(m)
G2LF	52	36	44	>4	220*

附着层数 Number of tie collars = (H-A-C) / B + 1

塔身 Mast	Hs(m)	H(m)	A1(m)	P(t)	R(t)	X(m)	Y(m)	L(m)	W(m)
G2LF					*				

主要性能参数 Specifications

机构 Mechanism	●		■		电动机 Motor		
	m/min	t	m/min	t		kW	
▲ ● ▼	80LF90R9	0-26.4	10	0-13.2	20	900m	90
		0-33	12	0-16.5	16		
	80LF110R9	0-66	6	0-33	8	900m	110
		0-35	16	0-17.5	20		
		0-43	12	0-21.5	16		
		0-86	6	0-43	8		
◀ ▶	125RA22H75	0.70 m/min				22	
⊙	11RFCV	0-0.6 rpm				2x11	
⊙	RTT	*				*	

电压 Voltage	kVA
380V (±10%)	*

*与制造商联系咨询 Contact us, please

本技术参数不受法律约束, 技术信息请详见相应说明书。
 Specifications and data are not legally binding. For any technical information, please refer to corresponding instructions.



hnjzlk.com

保留修改权力, 恕不另行通知 | Subject to modifications

111/112

2000系列

2000系列