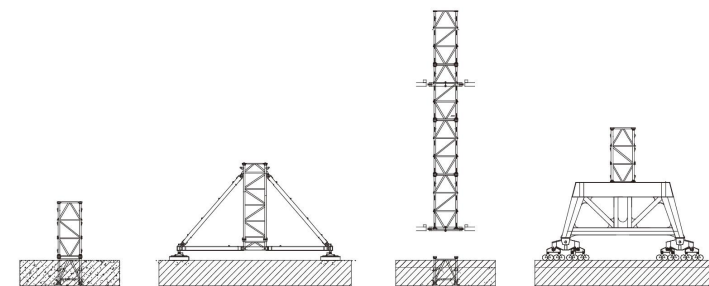
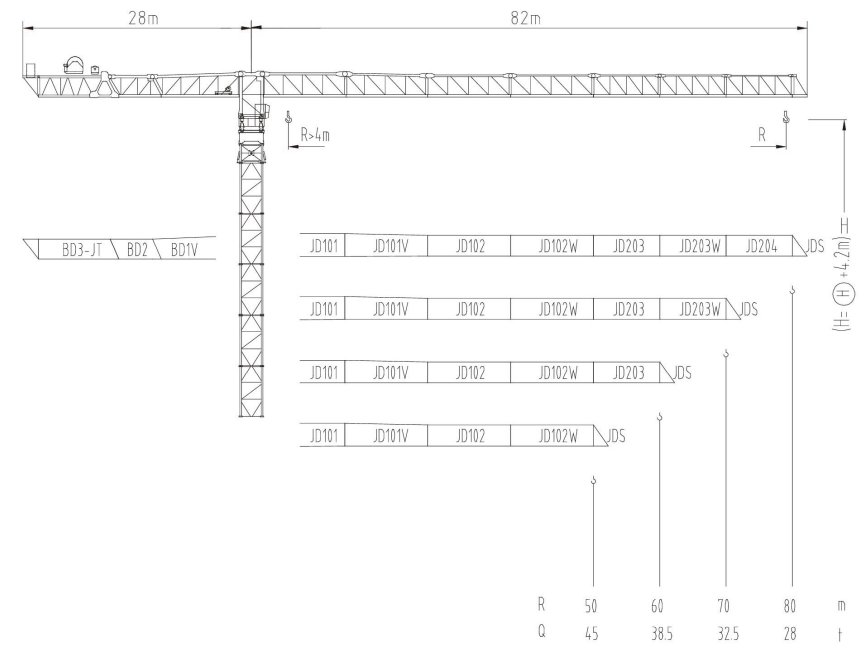




3200系列

JLP2600

110t

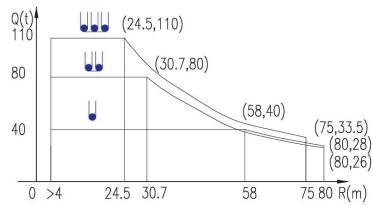
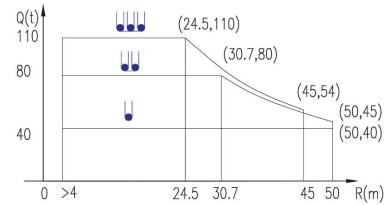


JLP2600/110t

3200系列

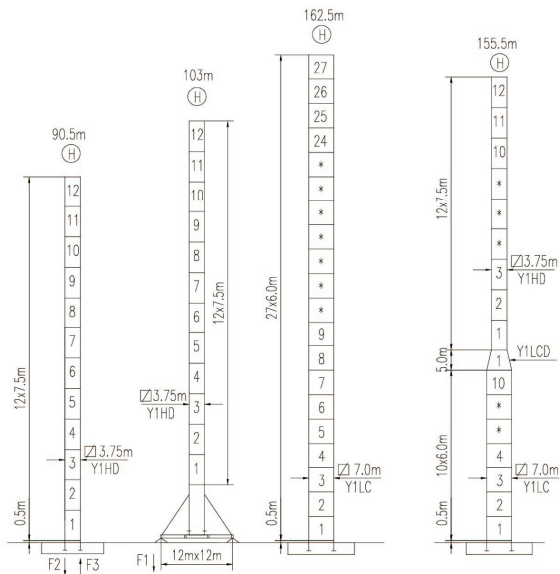
载荷曲线 Load Chart

R (m)	倍率 Fall	R(Cmax) (m)	Cmax (t)	25	30	35	40	45	50	55	60	65	70	75	80
80		58	40	40	40	40	40	40	40	40	38.5	35.3	32.5	30	28
		30.7	80	80	80	69	59.3	51.8	45	40.9	37	33.5	30.6	28.1	26
		24.5	110	107.6	87.3	73	62.5	54	52.5	47.3	43	40	36	33.5	
70		58	40	40	40	40	40	40	40	40	38.5	35.3	32.5		
		30.7	80	80	80	69	59.3	51.8	45	40.9	37	33.5	30.6		
		24.5	110	107.6	87.3	73	62.5	54	52.5	47.3	43	40			
60		58	40	40	40	40	40	40	40	40	38.5				
		30.7	80	80	80	69	59.3	51.8	45	40.9	37				
		24.5	110	107.6	87.3	73	62.5	54	52.5	47.3					
50		58	40	40	40	40	40	40	40	40					
		30.7	80	80	80	69	59.3	51.8	45						
		24.5	110	107.6	87.3	73	62.5	54							



特殊载荷可定制, 请咨询
Special data is available. Additional Loads on request

自立塔身高度 Self-supporting Tower Height



	400t	235t

	820t	210t
	435t	140t
	635t	

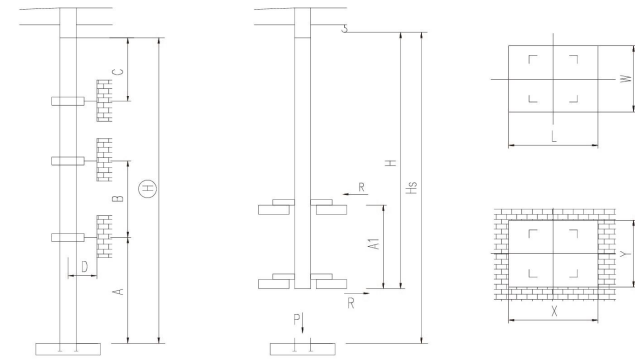
■ 工作状态支反力 In service reaction
■ 非工作状态支反力 out of service reaction
● 整机自由高度重量 (不含平衡重及压重)
Total weight free standing crane (excludes counter weight & ballast)

JLP2600/110t

附着塔机 Braced Crane

□ 3.75m

内爬塔机 Internal Climbing Crane



塔身节 Mast	A (m)	B (m)	C (m)	D (m)	H (m)
Y1HD	72	50	61	>5.5	264

附着层数 Number of tie collars = (H-A-C) / B + 1

塔身节 Mast	Hs (m)	H (m)	A1 (m)	P (t)	R (t)	X (m)	Y (m)	L (m)	W (m)
Y1HD					*				

主要性能参数 Specifications

机构 Mechanism							电动机 Motor kW
	m/min	t	m/min	t	m/min	t	
250LF160R16	0-20	40	0-10	80	0-6.7	110	1600m 160
	0-17	32	0-8.5	64	0-8.4	88	
	0-34	16	0-17	32	0-16.5	44	
250LF220R16	0-27	40	0-13.5	80	0-9	110	1600m 220
	0-33	32	0-16.5	64	0-11	88	
	0-66	16	0-33	32	0-22	44	
125RA55H00	0 - 52 m/min						55
15RFCV	0 - 0.3 rpm						3x15
RTT							*

电压 Voltage	kVA
380V (±10%)	*

*与制造商联系咨询 Contact us, please

本技术参数不受法律约束, 技术信息请详见相应说明书。
Specifications and data are not legally binding. For any technical information, please refer to corresponding instructions.



hnjzk.com

保留修改权力, 恕不另行通知 | Subject to modifications