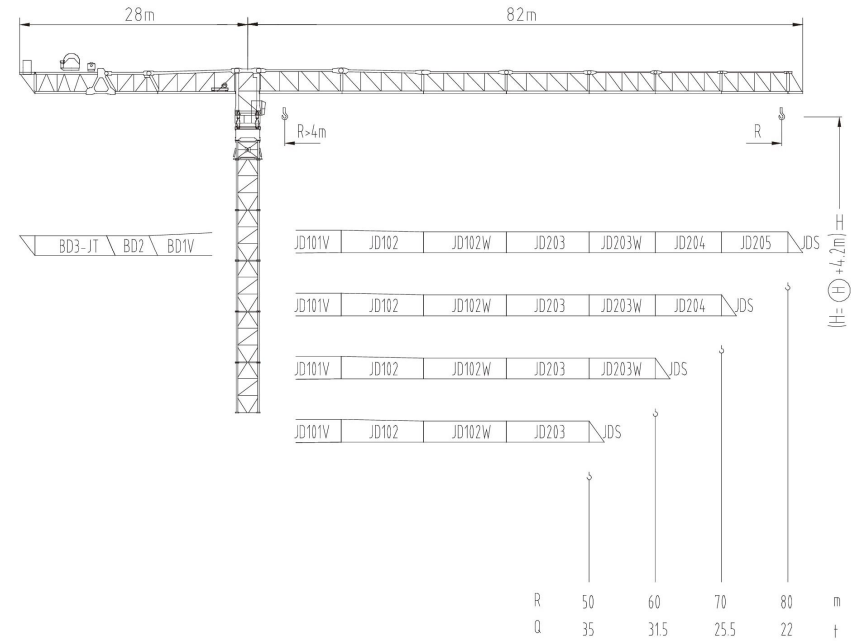


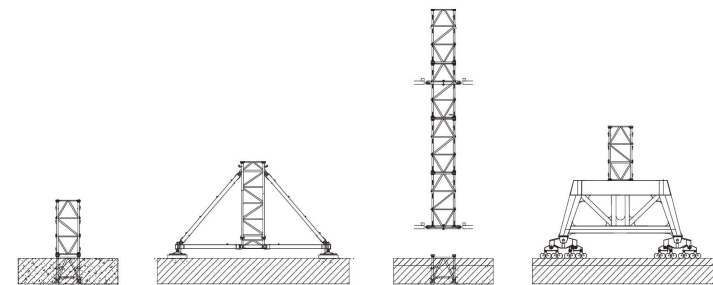
3200系列

JLP2000

100t

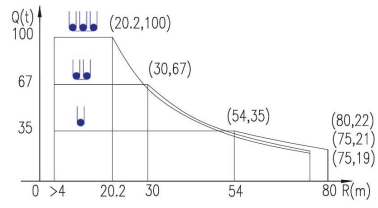
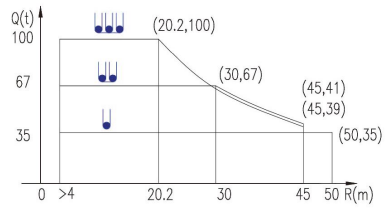


3200系列



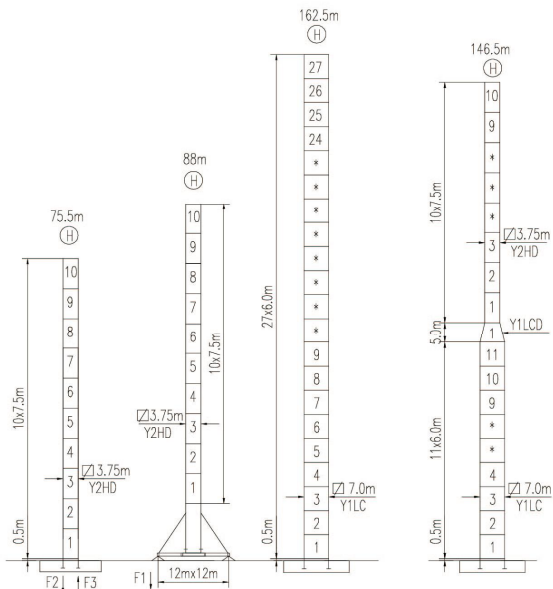
载荷曲线 Load Chart

R (m)	倍率 Fall	R(Cmax) (m)	Cmax (t)	25	30	35	40	45	50	55	60	65	70	75	80
80	30	54	35	35	35	35	35	35	35	34.6	31.5	28.5	25.5	23.5	22
		30	67	67	67	67	67	67	67	67	67	67	67	67	67
70	30	20.2	100	77	64.2	54	46	39	34.3	30.2	27	24	21	19	
		54	35	35	35	35	35	35	35	35	34.6	31.5	28.5	25.5	
60	30	20.2	100	77	64.2	54	46	39	34.3	30.2	27	24			
		54	35	35	35	35	35	35	35	35	34.6	31.5			
50	30	20.2	100	77	64.2	54	46	39	34.3	30.2					
		50	35	35	35	35	35	35	35	35					



特殊载荷可定制, 请咨询
Special data is available. Additional Loads on request

自立塔身高度 Self-supporting Tower Height



F1	279t	260t
		*

F2	646t	634t
F3	361t	397t
		457t

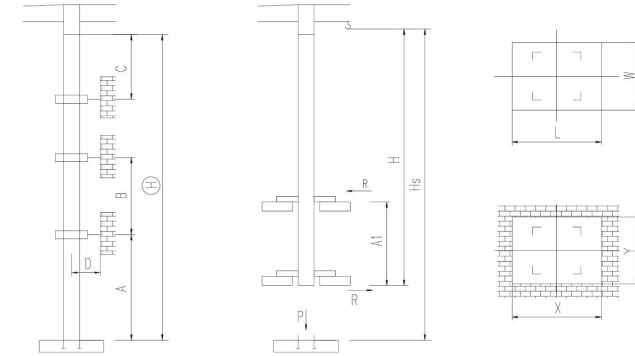
■ 工作状态支反力 In service reaction
■ 非工作状态支反力 out of service reaction
⊕ 整机自由高度重量 (不含平衡重及压重)
Total weight free standing crane (excludes counter weight & ballast)

JLP2000/100t

附着塔机 Braced Crane

3.75m

内爬塔机 Internal Climbing Crane



塔身节 Mast	A (m)	B(m)	C (m)	D (m)	H(m)
Y2HD	57	40	48	>5.5	264

附着层数 Number of tie collars = (H-A-C) / B + 1

塔身节 Mast	Hs(m)	H(m)	A1(m)	P(t)	R(t)	X(m)	Y(m)	L(m)	W(m)
Y2HD									*

主要性能参数 Specifications

机构 Mechanism	m/min		t		m/min		t		电动机 Motor kW
	0-20	35	0-10	67	0-6.7	100	0-8.4	80	
250LF160R16	0-17	28	0-8.5	52	0-8.4	80	1600m	160	
	0-34	14	0-17	26	0-16.5	40			
	0-27	35	0-13.5	67	0-9	100			
250LF220R16	0-33	28	0-16.5	52	0-11	80	1600m	220	
	0-66	14	0-33	26	0-22	40			
125RA55H80	0 - 52 m/min								55
15RFCV	0 - 0.3 rpm								3x15
RTT									*

电压 Voltage	kVA
380V (±10%)	*

*与制造商联系咨询 Contact us, please

本技术参数不受法律约束, 技术信息请详见相应说明书。
Specifications and data are not legally binding. For any technical information, please refer to corresponding instructions.



hnjzlk.com

保留修改权力, 恕不另行通知 | Subject to modifications