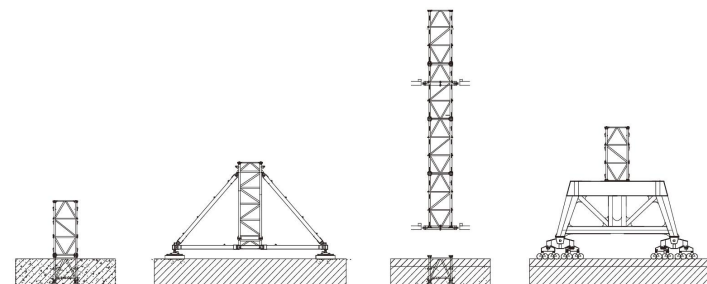
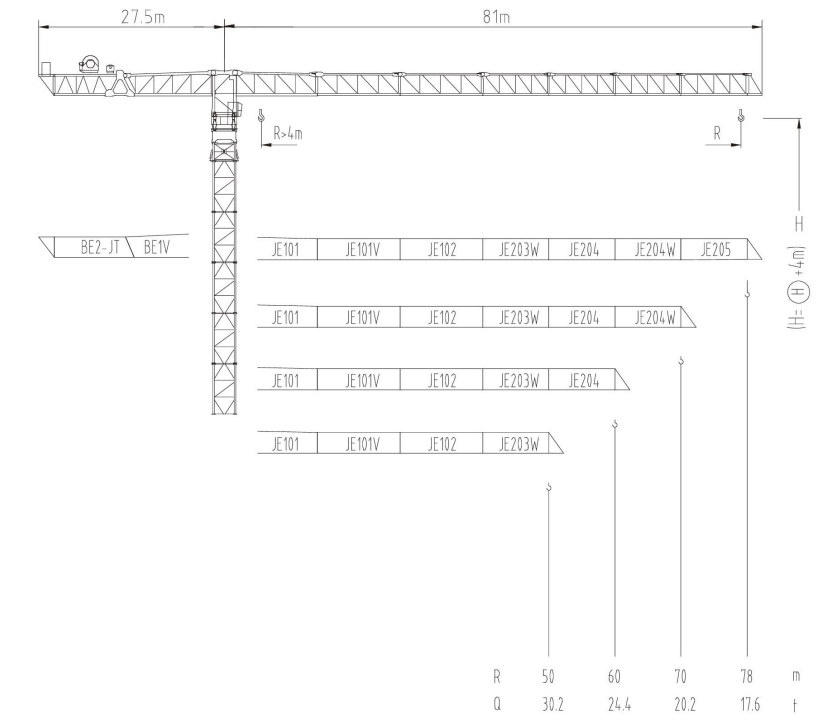




2800系列

JLP1600

64t

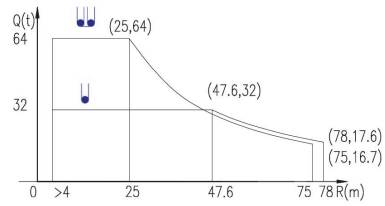
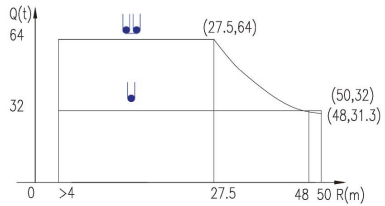


JLP1600/64t

2800系列

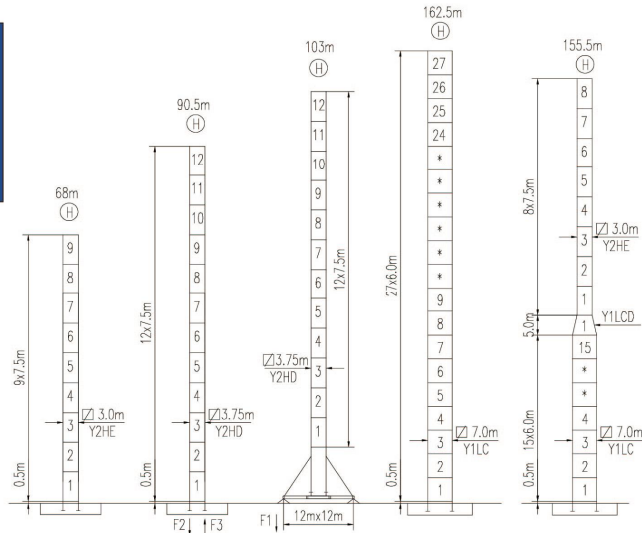
载荷曲线 Load Chart

R (m)	倍率 Fall	R(Cmax) (m)	Cmax (t)	30	35	40	45	48	50	55	60	65	70	75	78
80	47.6	32	32	32	32	32	32	31.7	30.2	27	24.4	22.1	20.2	18.5	17.6
	25	64	52	43.4	37.2	32.3	29.9	28.4	25.2	22.5	20.3	18.4	16.7		
70	47.6	32	32	32	32	32	31.7	30.2	27	24.4	22.1				
	25	64	52	43.4	37.2	32.3	29.9	28.4	25.2	20.3					
60	47.6	32	32	32	32	32	31.7	30.2	27						
	25	64	52	43.4	37.2	32.3	29.9	28.4	25.2						
50	50	32	32	32	32	32	32								
	27.5	64	58	48.3	41.1	35.6	31.3								



特殊载荷可定制，请咨询
Special data is available. Additional Loads on request

自立塔身高度 Self-supporting Tower Height



	●	■
F1	245t	230t
		*

	●	■
F2	700t	725t
F3	450t	525t
	541t	

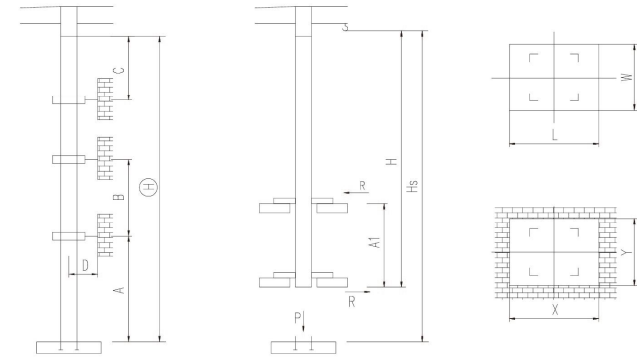
- 工作状态支反力 In service reaction
- 非工作状态支反力 Out of service reaction
- ⊕ 整机自由高度重量 (不含平衡重及压重) Total weight of free standing crane (excludes counter weight & ballast)

JLP1600/64t

附着塔机 Braced Crane

□ 3.0m

内爬塔机 Internal Climbing Crane



塔身 Mast	A (m)	B(m)	C (m)	D (m)	H(m)
Y2HE	49	34	42	>5.5	400*

附着层数 Number of tie collars = (H-A-C) / B + 1

塔身 Mast	Hs(m)	H(m)	A1(m)	P(t)	R(t)	X(m)	Y(m)	L(m)	W(m)
Y2HE					*				

主要性能参数 Specifications

机构 Mechanism	●		●		电动机 Motor kW	
	m/min	t	m/min	t		
▲ 250LF160R16	0-18	32	0-10	64	1600m	160
	0-23	25	0-12.5	50		
	0-46	12	0-25	25		
▼ 250LF220R16	0-24	32	0-13.5	64	1600m	220
	0-30	25	0-17	50		
	0-60	12	0-34	25		
◀▶ 80RA37H80	0 - 52 m/min					37
⊕ 15RFCV	0-0.3 rpm					3x15
RTT					*	

电压 Voltage	kVA
380V (±10%)	*

*与制造商联系咨询 Contact us, please

本技术参数不受法律约束，技术信息详见相应说明书。
Specifications and data are not legally binding. For any technical information, please refer to corresponding instructions.



hnjzk.com

保留修改权力，恕不另行通知 | Subject to modifications