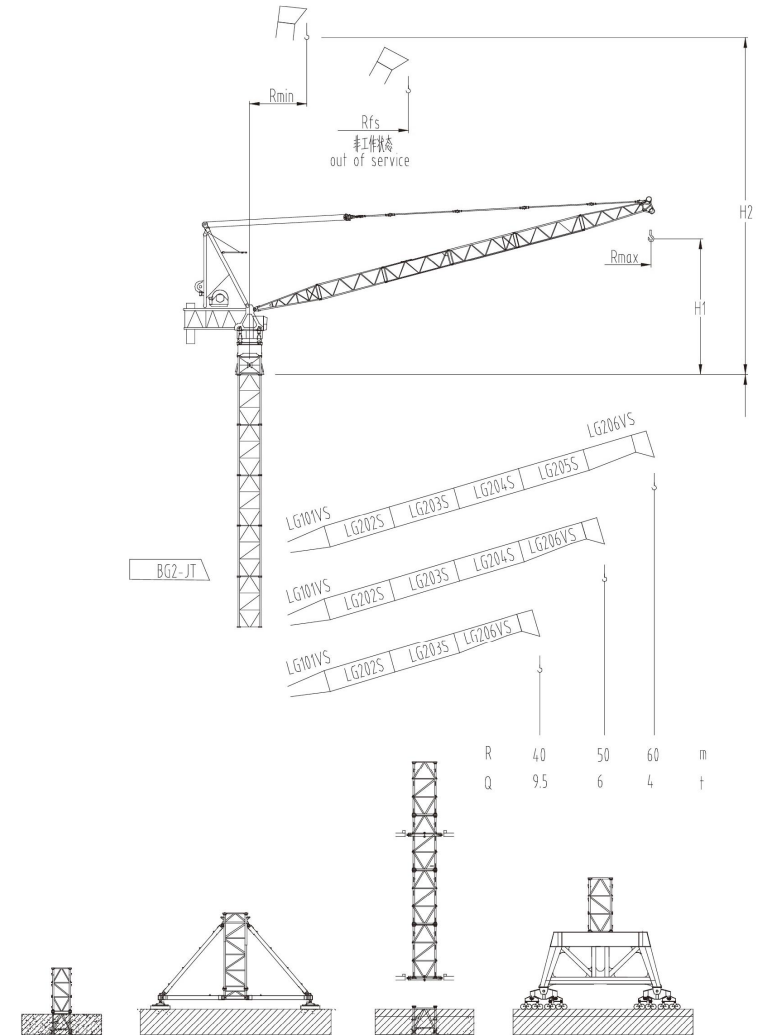
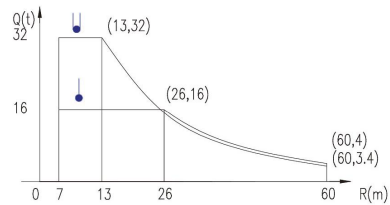
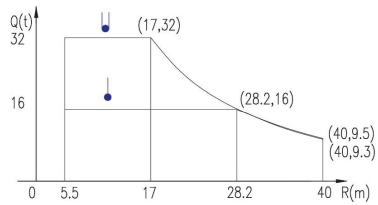


Rmax m	H1 m	Rmin m	H2 m	Rfs m
60	19.2	7	65.7	40
50	16.5	6.5	55.7	45
40	13.8	5.5	45.7	40



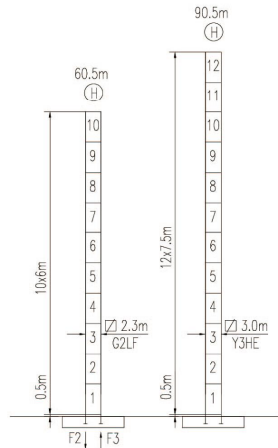
### 载荷曲线 Load Chart

R (m)	倍率 Fall	R(Cmax) (m)	Cmax (t)	15	20	25	30	35	40	45	50	55	60
60	●	26	16	16	16	16	13.2	10.5	8.5	7	5.7	4.7	4
	●	13	32	27	21.3	15.9	12.3	9.8	7.8	6.3	5.1	4.1	3.4
50	●	27.5	16	16	16	16	14.2	11.3	9.1	7.4	6		
	●	16.7	32	32	25.5	18.9	14.5	11.3	9	7	5.6		
40	●	28.2	16	16	16	16	14.7	11.8	9.5				
	●	17	32	32	25.9	19.3	14.8	11.6	9.3				



特殊载荷可定制, 请咨询  
Special data is available. Additional Loads on request

### 自立塔身高度 Self-supporting Tower Height



	●	■
F1	165t	185t
	*	

	●	■
F2	501t	612t
F3	386t	517t
		194t

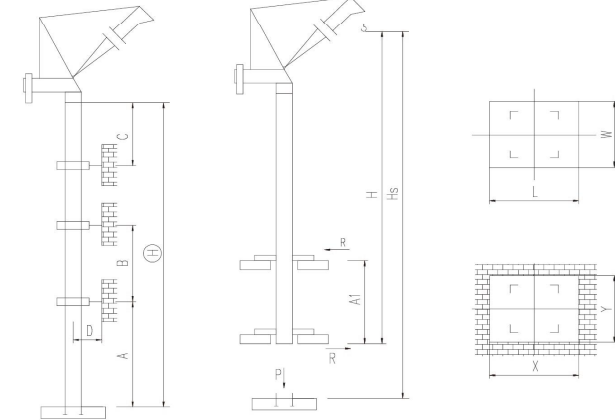
■ 工作状态支反力 In service reaction  
 ■ 非工作状态支反力 out of service reaction  
 整机自由高度重量 (不含平衡重及压重)  
 Total weight of free standing crane (includes counter weight & ballast)

JLD500/32t

### 附着塔机 Braced Crane

2.3m

### 内爬塔机 Internal Climbing Crane



塔身 Mast	A (m)	B(m)	C (m)	D (m)	H(m)
G2LF	46	32	39	>4	440*

附着层数 Number of tie collars = (H-A-C) / B + 1

塔身 Mast	Hs(m)	H(m)	A1(m)	P(t)	R(t)	X(m)	Y(m)	L(m)	W(m)
G2LF					*				

### 主要性能参数 Specifications

机构 Mechanism	●		●		电动机 Motor	
	m/min	t	m/min	t		kW
▲ ● ▼	200LF110R9	0-36	16	0-18	32	900m 110
		0-45	13	0-22.5	26	
		0-90	6	0-45	13	
▶ ● ◀	200LF160R9	0-48	16	0-24	32	900m 160
		0-60	13	0-30	26	
		0-120	6	0-60	13	
▶	225RA75R380	4 min				75
▶	15RFVCV	0-0.4 rpm				2x15
▶	RTT	*				

电压 Voltage	kVA
380V (±10%)	*

\*与制造商联系咨询 Contact us, please

本技术参数不受法律约束, 技术信息请详见相应说明书。  
 Specifications and data are not legally binding. For any technical information, please refer to corresponding instructions.



hnjzlk.com

保留修改权力, 恕不另行通知 | Subject to modifications