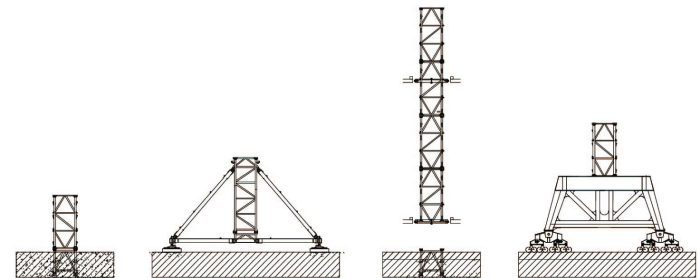
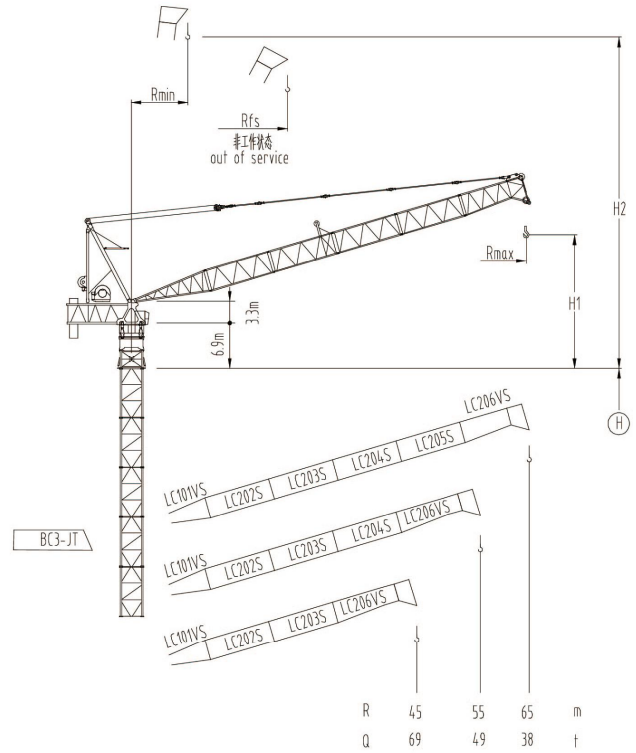
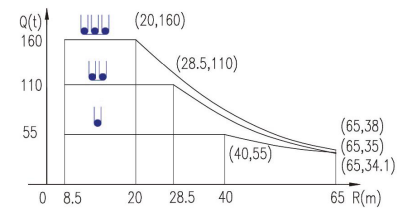
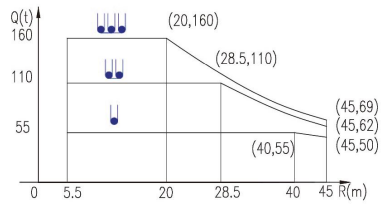


Rmax m	H1 m	Rmin m	H2 m	Rfs m
65	19	8.5	71.6	40
55	14	6.8	61.6	35
45	9	5.5	51.6	30



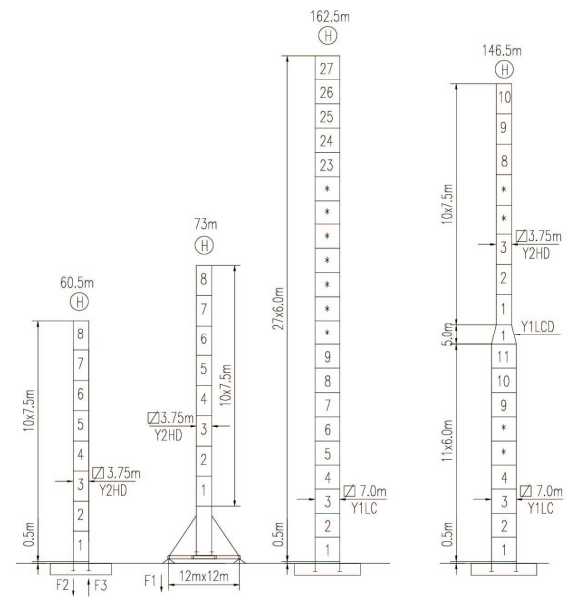
载荷曲线 Load Chart

R (m)	倍率 Fall	R(Cmax) (m)	Cmax (t)	25	30	35	40	45	50	55	60	65
65	40	55	55	55	55	55	55	50	45	40	38	35
		28.5	110	110	106	90	73	62	50	43	38	34.1
55	40	55	55	55	55	55	55	50	45	40		
		28.5	110	110	106	90	73	62	50	43		
45	40	55	55	55	55	55	55	50				
		28.5	110	110	106	90	73	62				
		20	160	131	110	95	80	69	55	49		



特殊载荷可定制, 请咨询
Special data is available. Additional Loads on request

自立塔身高度 Self-supporting Tower Height



	●	■
F1	340t	220t

	●	■
F2	858t	520t
F3	563t	305t
	409t	

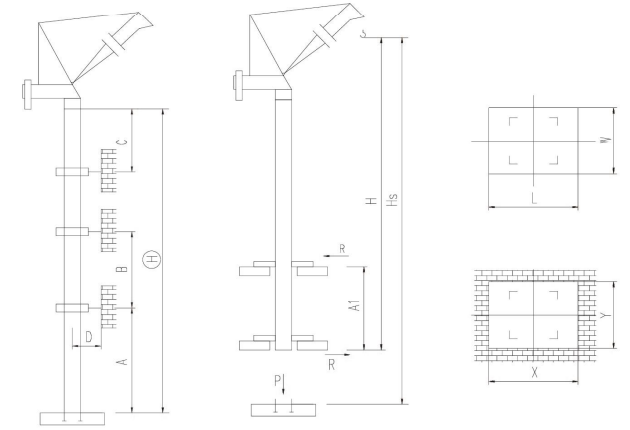
■ 工作状态支反力 In service reaction
 ■ 非工作状态支反力 out of service reaction
 ● 整机自由高度重量 (不含平衡重及压重)
 Total weight of free standing crane (excludes counter weight & ballast)

JLD3200/160t

附着塔机 Braced Crane

□ 3.75m

内爬塔机 Internal Climbing Crane



塔身节 Mast	A (m)	B (m)	C (m)	D (m)	H (m)
Y2HD	42	29	35	>5.5	264

附着层数 Number of tie collars = (H-A-C) / B + 1

塔身节 Mast	Hs (m)	H (m)	A1 (m)	P (t)	R (t)	X (m)	Y (m)	L (m)	W (m)
Y2HD					*				

主要性能参数 Specifications

机构 Mechanism	●		●●		●●●		电动机 Motor kW
	m/min	t	m/min	t	m/min	t	
350LF220R16	0-19	55	0-9.6	110	0-6.4	160	1600m
	0-23.5	44	0-9.3	88	0-8	128	
	0-47	22	0-18.5	44	0-16	64	
350LF315R16	0-25	55	0-12.5	110	0-8.5	160	1600m
	0-31	44	0-15.5	88	0-10.5	128	
	0-62	22	0-31	44	0-21	64	
	350RA220R380	4 min					
18RFCV	0 - 0.3 rpm					4x18.5	
RTT	*						

电压 Voltage	kVA
380V (±10%)	-

*与制造商联系咨询 Contact us, please

本技术参数不受法律约束, 技术信息请详见相应说明书。
Specifications and data are not legally binding. For any technical information, please refer to corresponding instructions.



hnjlk.com

保留修改权力, 恕不另行通知 | Subject to modifications

3600系列

3600系列