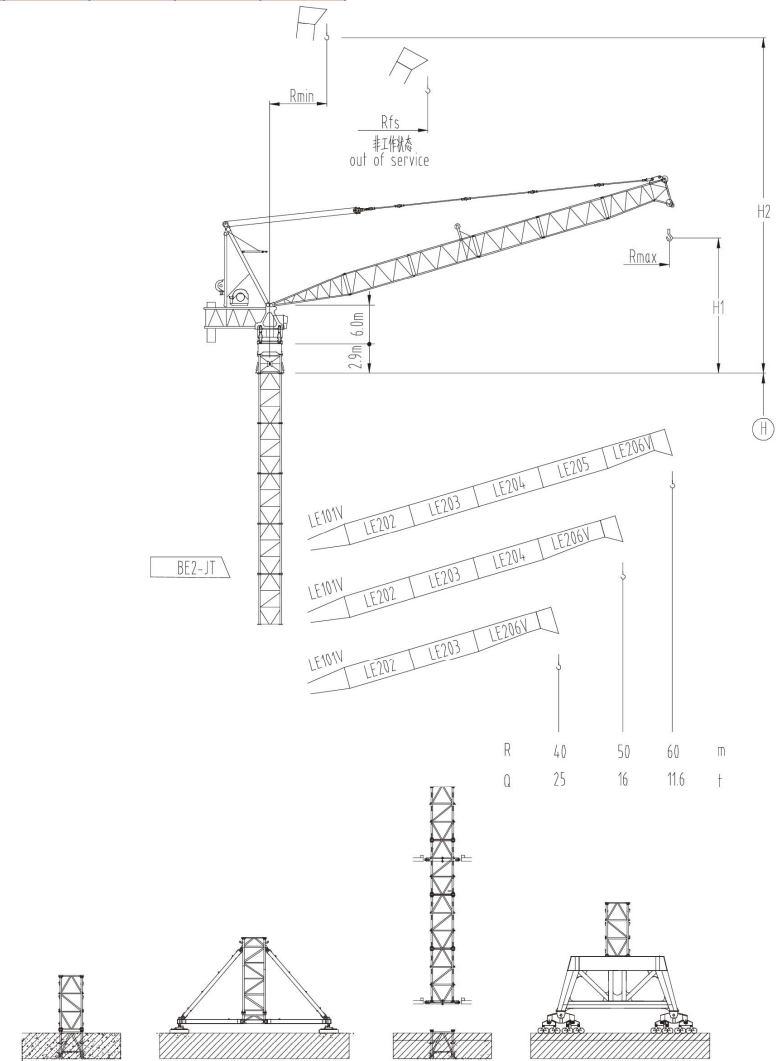


2800系列

JLD1400

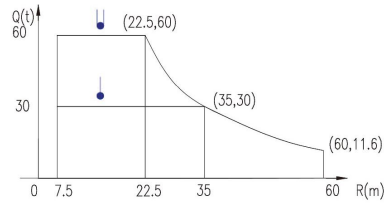
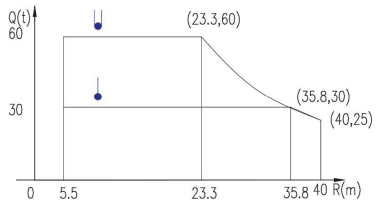
60t

Rmax m	H1 m	Rmin m	H2 m	Rfs m
60	20.8	7.5	70.9	40
50	18.2	6.5	60.9	35
40	15.5	5.5	50.9	45



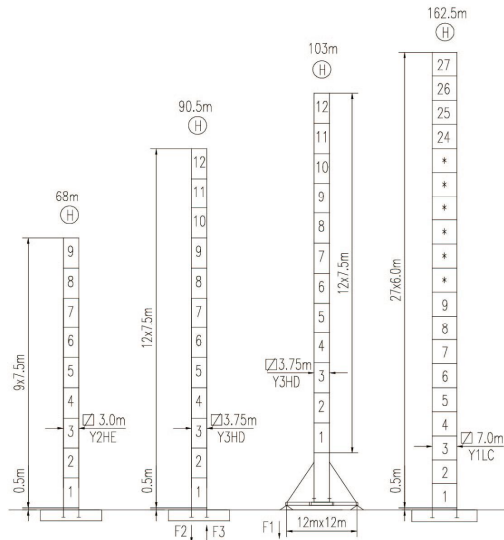
载荷曲线 Load Chart

R (m)	倍率 Fall	R(Cmax) (m)	Cmax (t)	30	35	40	45	50	55	60	65	70
70	●	35	30	30	30	24.5	19.6	16.4	13.8	11.6	8.2	6.9
60	●	35	30	30	30	24.5	19.6	16.4	13.8	11.6		
	●	22.5	60	37.1	30	24.5	19.6	16.4	13.8	11.6		
50	●	35.8	30	30	30	25	20.2	16				
	●	23.3	60	38	30.8	25	20.2	16				
40	●	35.8	30	30	30	25						
	●	23.3	60	38	30.8	25						



特殊载荷可定制, 请咨询
Special data is available. Additional Loads on request

自立塔身高度 Self-supporting Tower Height



	●	■
F1	200t	152t
		*

	●	■
F2	538t	341t
F3	318t	136t
		372t

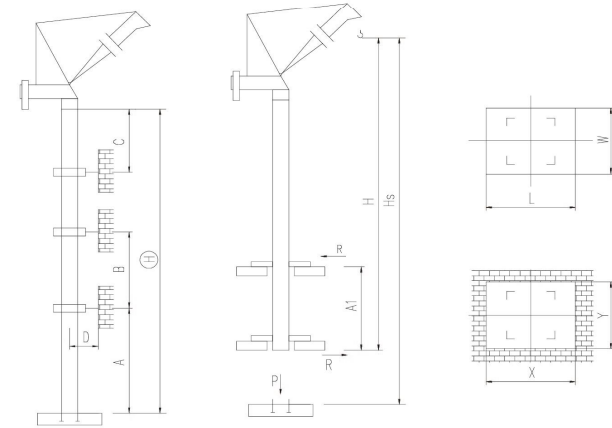
■ 工作状态支反力 In service reaction ■ 非工作状态支反力 out of service reaction
● 整机自由高度重量 (不含平衡重及压重) Total weight of free standing crane (excludes counter weight & ballast)

JLD1400/60t

附着塔机 Braced Crane

□ 3.0m

内爬塔机 Internal Climbing Crane



塔身 Mast	A (m)	B (m)	C (m)	D (m)	H (m)
Y2HE	49	34	42	>5.5	440*

附着层数 Number of tie collars = (H-A-C) / B + 1

塔身 Mast	Hs (m)	H (m)	A1 (m)	P (t)	R (t)	X (m)	Y (m)	L (m)	W (m)
Y2HE					*				

主要性能参数 Specifications

机构 Mechanism	●		●		电动机 Motor kW	
	m/min	t	m/min	t		
▲ 350LF160R9	0-32	30	0-18	60	900m	160
	0-40	24	0-23	48		
	0-80	12	0-46	24		
▼ 350LF220R9	0-44	30	0-24	60	900m	220
	0-55	24	0-30	48		
	0-110	12	0-60	24		
300RAG0R380	4 min					90
15RFCV	0 - 0.3 rpm					3x15
RTT					*	

电压 Voltage	kVA
380V (±10%)	*

*与制造商联系咨询 Contact us, please

本技术参数不受法律约束, 技术信息详见相应说明书。
Specifications and data are not legally binding. For any technical information, please refer to corresponding instructions.



hnjzlk.com

保留修改权力, 恕不另行通知 | Subject to modifications