

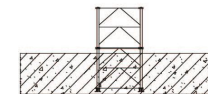
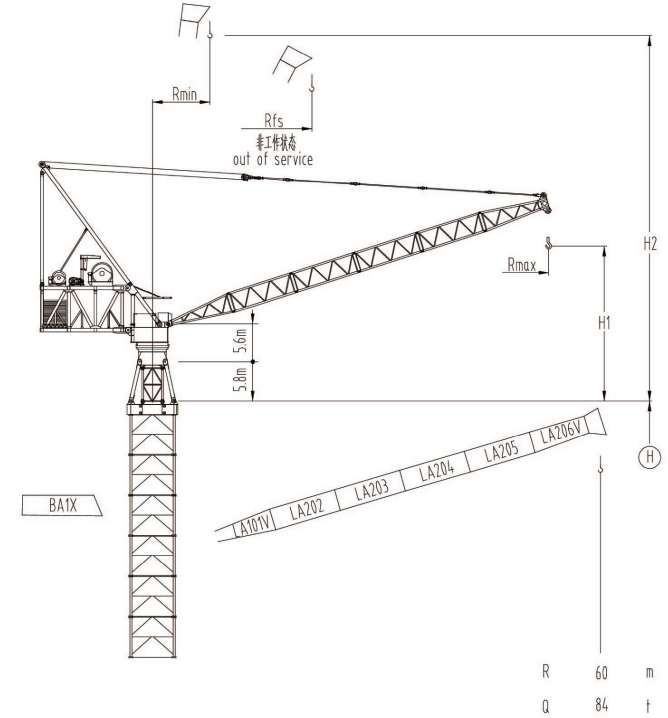
# 4500系列

JLD10000

400t

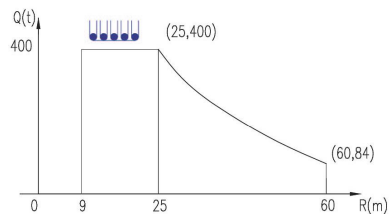
4500系列

Rmax m	H1 m	Rmin m	H2 m	Rfs m
60	17	9	61.5	60



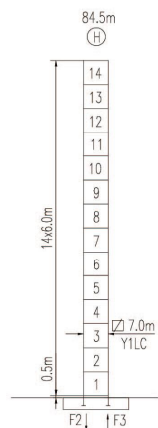
## 载荷曲线 Load Chart

R (m)	倍率 Fall	R(Cmax) (m)	Cmax (t)	25	30	35	40	45	50	55	60
60		25	400	400	320	262	220	180	144	112	84



特殊载荷可定制, 请咨询  
Special data is available. Additional Loads on request

## 自立塔身高度 Self-supporting Tower Height



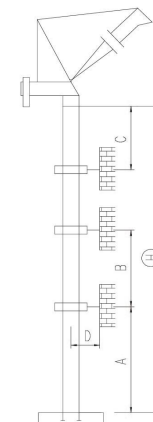
	●	■
F2	139t	1300t
F3	463t	572t
	1450t	

■ 工作状态支反力 In service reaction  
 ■ 非工作状态支反力 out of service reaction  
 ● 整机自由高度重量 (不含平衡重及压重)  
 Total weight of free standing crane (excludes counter weight & ballast)

JLD10000/400t

## 附着塔机 Braced Crane

7.0m



塔身节 Mast	A (m)	B (m)	C (m)	D (m)	H (m)
Y1LC	75	60	66	>6.5	160 320*

附着层数 Number of tie collars =  $(\text{H} - \text{A} - \text{C}) / \text{B} + 1$

## 主要性能参数 Specifications

机构 Mechanism	m/min		电动机 Motor kW
	t		
500LF315R16H	0-3.6	400	1600m 315
	0-4.5	320	
	0-9	160	
500LF315R16H	0-7.2	400	2x1600m* 2x315
	0-9	320	
	0-18	160	
400RA315R380	5 min		315
24RFCV	0 - 0.3 rpm		4x24
RTT	*		

电压 Voltage	
380V (±10%)	*

\*与制造商联系咨询 Contact us, please

本技术参数不受法律约束, 技术信息请详见相应说明书。  
Specifications and data are not legally binding. For any technical information, please refer to corresponding instructions.



hnjzk.com

保留修改权力, 恕不另行通知 | Subject to modifications

07/08